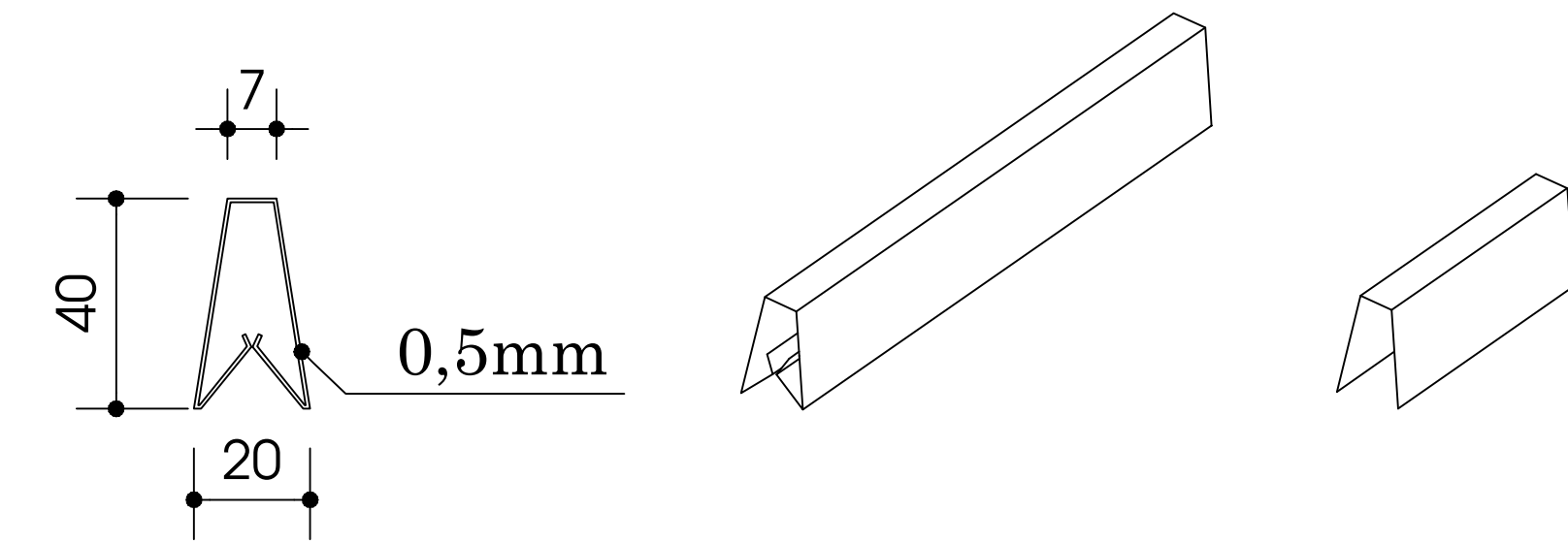
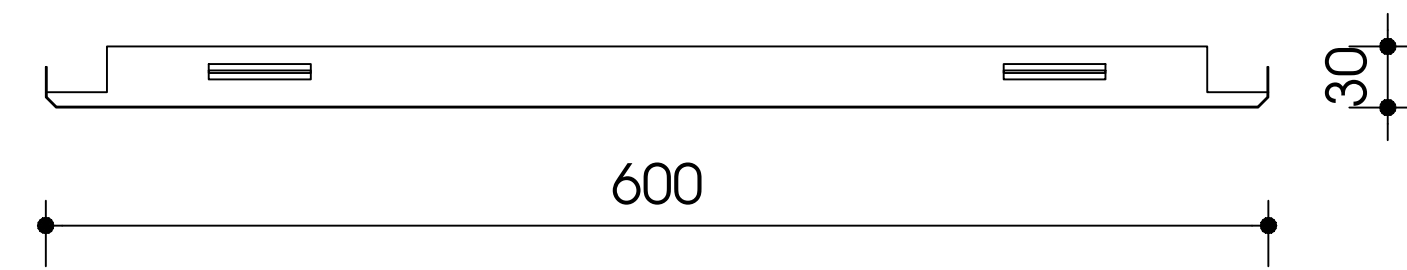
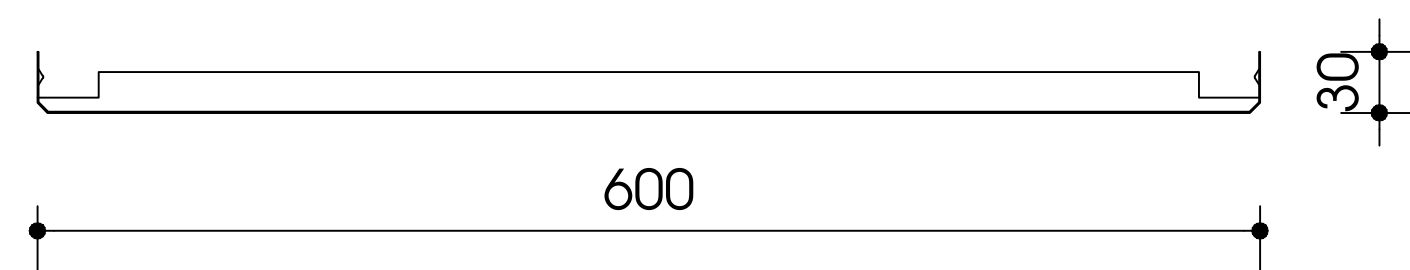
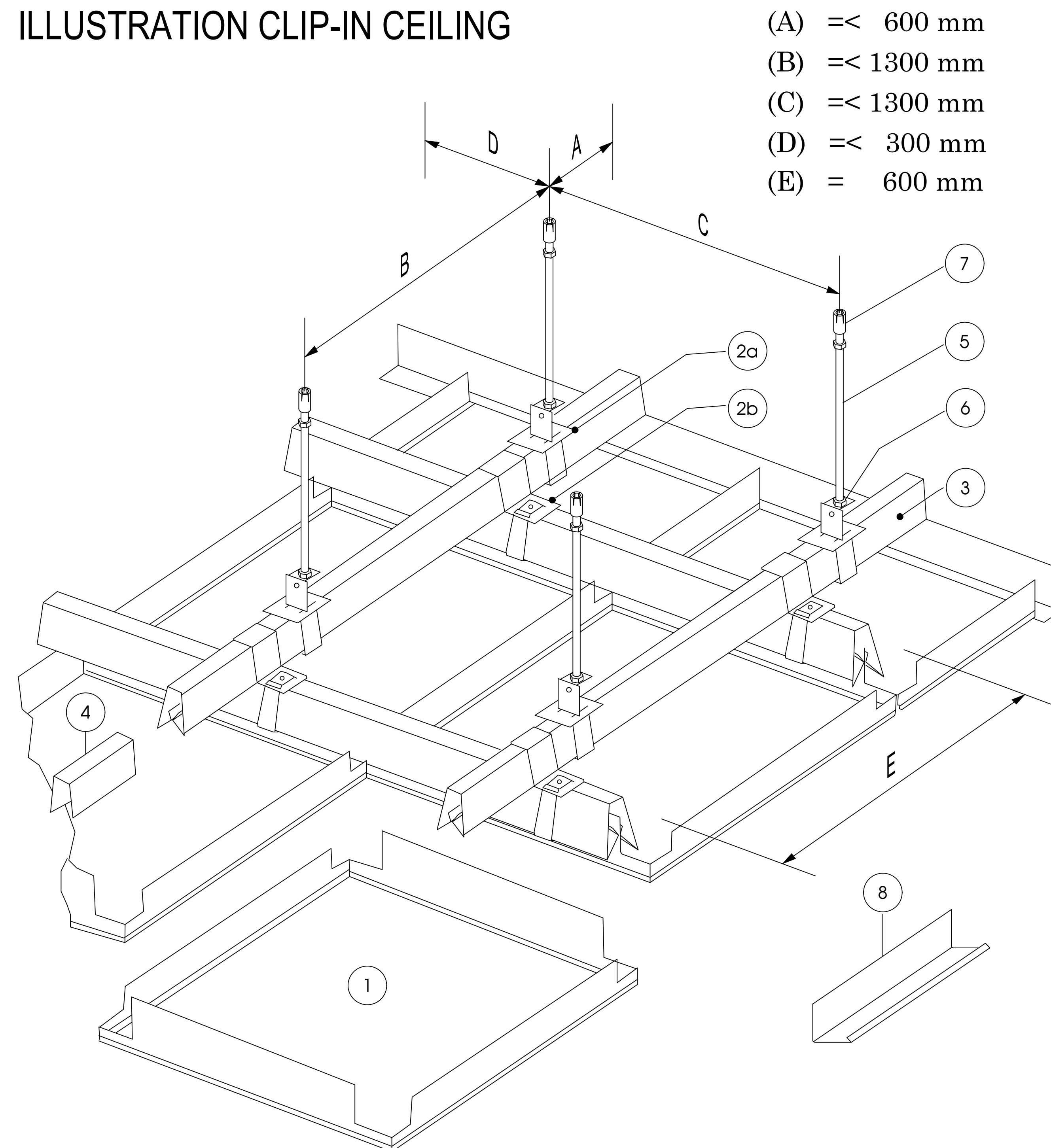


# ALUS CLIP-IN CEILING



## ILLUSTRATION CLIP-IN CEILING



- (A)  $\leq 600$  mm
- (B)  $\leq 1300$  mm
- (C)  $\leq 1300$  mm
- (D)  $\leq 300$  mm
- (E) = 600 mm

### (1) Clip-in Panel

Made by aluminium alloy, 600x600mm, 30mm height and color coating by design.

### (2a, 2b) Up and down connection

Made by galvanized steel

Function: Connecting between frame system and the rod.

### (3) Clip-in profile

Made by galvanized steel 40x20mm, 0.5mm thickness, 5m length.

### (4) Clip-in profile splice

Made by galvanized steel

Function: Connecting clip-in profiles together.

### (5) Hanger rod M6

Made by galvanized steel

### (6) Ecu M6

Made by galvanized steel, function is adjust height of ceiling level.

### (7) Anchor bolt M6

Made by galvanized steel

### (8) V25 edge cover

Made by aluminium alloy, color coating.

© Copyright Anh Duong

**ALUS**

ARCHITECTURAL PRODUCT'S DETAIL AND INSTALLATION

THE DRAWING SHALL NOT BE USED FOR CONSTRUCTION UNLESS CERTIFIED FROM ANH DUONG METAL.  
THIS DRAWING AND DESIGN IS COPYRIGHT AND NO PORTION MAY BE REPRODUCED WITHOUT THE PERMISSION OF ANH DUONG METAL.

**ANH DUONG METAL**

Telephone : 03 889 23 998  
Email : contact@anhduongmetal.com.vn  
Website : Anhduongmetal.com.vn  
86 Nguyen Thi Nhung st, Hiep Binh Phuoc ward,  
Thu Duc city, HCMC