



# ANH DUONG METAL



Khát vọng mang đến sự đổi mới  
*Aspire to bring innovation*

Telephone: 03 889 23 998

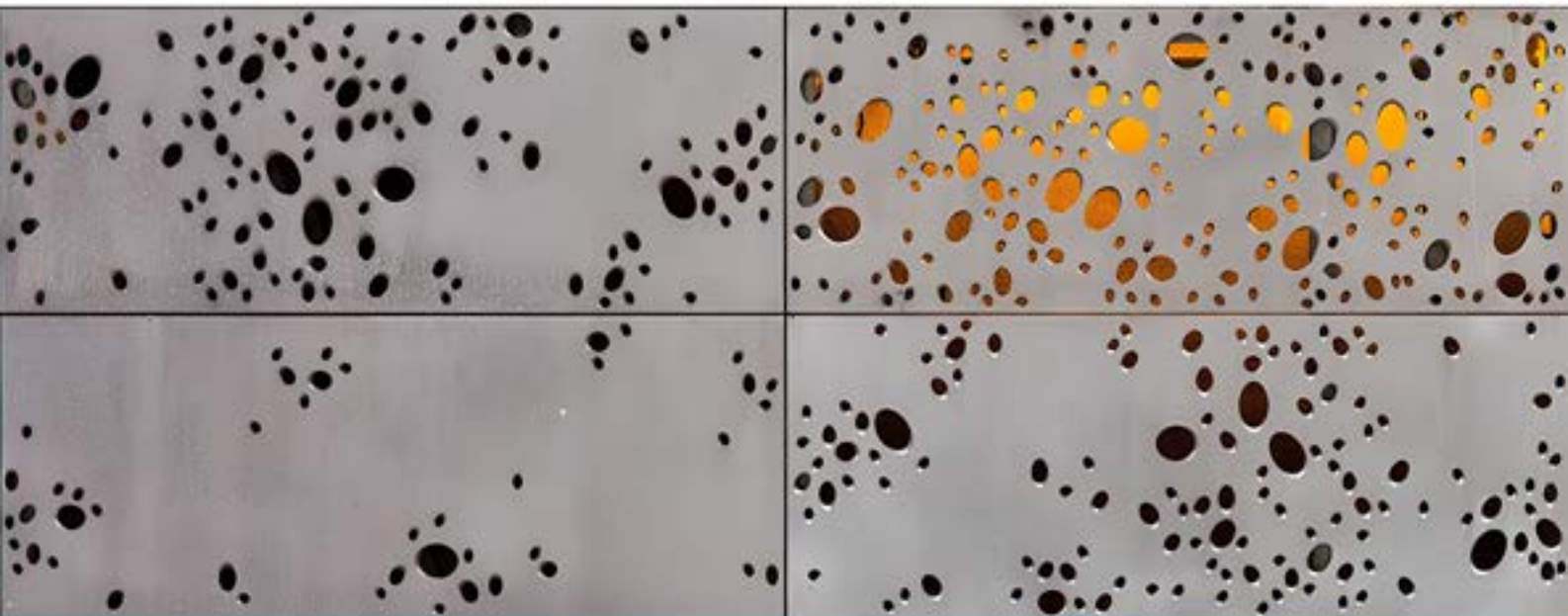
Email: [Contact@anhduongmetal.com.vn](mailto:Contact@anhduongmetal.com.vn)

Website: [Anhduongmetal.com.vn](http://Anhduongmetal.com.vn)

Add: 86th Nguyen Thi Nhung st,  
Hiep Binh Phuoc ward,  
Thu Duc city, HCMC

## NỘI DUNG / *CONTENT*

1. Trần C / *Type C ceiling*
2. Trần B / *Type B ceiling*
3. Trần U / *Type U ceiling*
4. Trần Clip-in / *Clip-in ceiling*
5. Trần Honeycomb / *Honeycomb ceiling*
6. Trần sọc / *Linear Ceiling*
7. Tấm ốp Alu.s / *Alu.s cladding*



## TRẦN ALU.S TYPE C ALU.S TYPE C CEILING

- Lắp đặt dễ dàng  
Conveniently installation
- Kiến trúc hiện đại  
Contemporary architecture
- Vật liệu bền vững  
Sustainability material



**Alu.S type C** là tấm trần dạng sọc được thiết kế hiện đại, mục tiêu lắp đặt thuận tiện và dễ dàng vận chuyển.

**Alu.S type C** is linear ceiling, be applied for contemporary architecture. Conveniently installation and delivery.

**Ứng dụng:**  
**Application:**

☒ Nội Thất

☐ Ngoại Thất

☒ Đột lỗ

☒ Vân gỗ

**ANH DUONG METAL**

Telephone : (+84)388923998

Email : Contact@anhduongmetal.com.vn

Website : Anhduongmetal.com.vn

Address : 86 Nguyen Thi Nhung st, Hiep Binh Phuoc ward, Thu Duc city, HCMC

**SPECIFICATION**

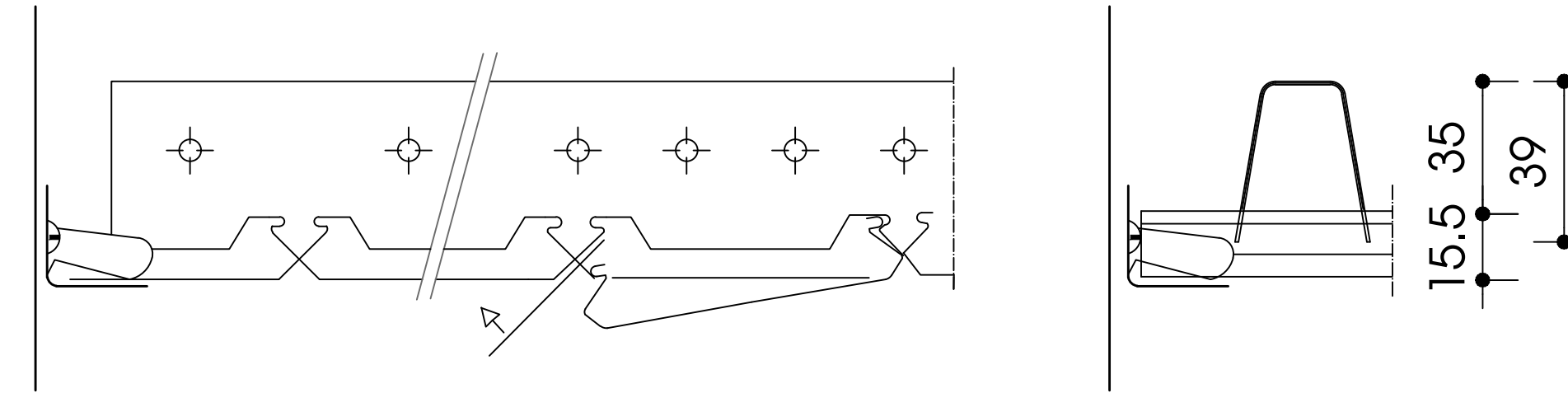
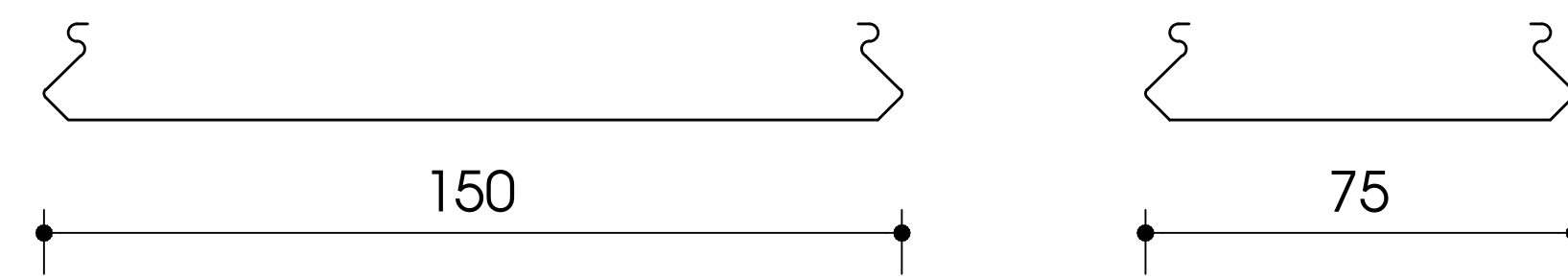
<b>Product name</b>	<b>ALUS-C</b>
Typical Size	75, 150, 300 mm width
Thickness	0.5-1.0mm
Material Applied	AA 3003-H14 or Equivalent
Color	Based on design
Type of Coating	PE / Powder coating/ PVDF
Standard of Coating	AAMA 2603/2604/2605
Frame and Accessories	Steel or Aluminium
Frame and Accessories Coating finish	Galvanized/ Hotdip galvanized/ PE

No	Specification	Unit	Result	Standard
I.TENSILE TEST FOR AA 3003-H14/24				
1	Tensile Strength (Rm)	MPa	min 145 - max 165	Standard DIN EN 485-2-2013: Aluminum and Aluminum Alloy - Part 2: Mechanical Properties
2	Yield Strength (Rpo,2)	MPa	min 125	
3	Elongation	%	min 4	
4	Hardness	HBW	46	
II. CHEMICAL COMPOSITION				
1	Sillicon (Si)	%	0.6	Standard DIN EN 573-3-2009 : Aluminum and Aluminum Alloy - Chemical Composition and Form of Product
2	Iron (Fe)	%	0.7	
3	Copper (Cu)	%	0.05 - 0.2	
4	Manganese (Mn)	%	1.0 - 1.5	
5	Magnesium (Mg)	%	-	
6	Crom (Cr)	%	-	
7	Zinc (Zn)	%	0.1	
8	Other	%	0.15	
9	Aluminum (Al)	%	Remainder	

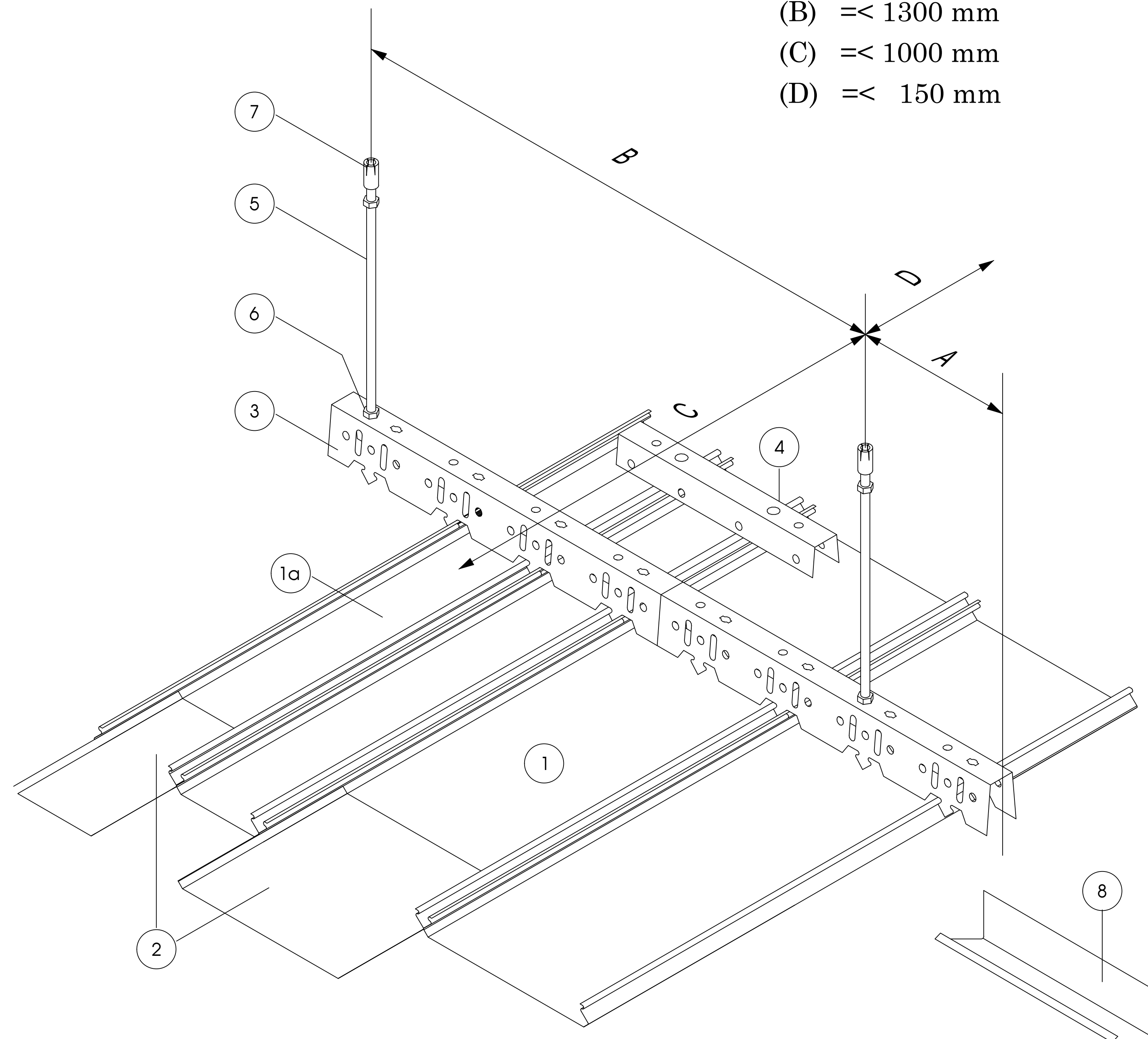
<b>III. TYPE OF COATING: PE/ POWDER COATING/ PVDF</b>				
1	Thickness	micron	According to standard of per type of coating	- Standard AAMA 2603/2604/2605 : Voluntary Specification, Performance Requirements and Test Procedures For Superior Performing Organic Coatings on Aluminum Extrusion and Panel
2	Color	micron	as requirement	



# ALUS 150C, 75C CEILING



## ILLUSTRATION TYPE C CEILING



- (A)  $\leq 300$  mm
- (B)  $\leq 1300$  mm
- (C)  $\leq 1000$  mm
- (D)  $\leq 150$  mm

### (1, 1a) 75C, 150C

Made by aluminium alloy, 150mm and 75mm width, 15.5mm height and color coating by design.

### (2) Assembly panel bracket

Made by aluminium alloy and color coating.  
Function is connect between two ceiling panels

### (3) Ceiling frame

Made by galvanized steel, 32mm width, 39mm height.

### (4) Assmeby frame bracket

Made by aluminium alloy and color coating.  
Function is connect between two ceiling frames.

### (5) Hanger rod M6

Made by galvanized steel

### (6) Ecu M6

Made by galvanized steel, function is adjust height of ceiling level.

### (7) Anchor bolt M6

Made by galvanized steel

### (8) V25 edge cover

Made by aluminium alloy, color coating.

© Copyright Anh Duong

**ALUS**

ARCHITECTURAL PRODUCT'S DETAIL AND INSTALLATION

THE DRAWING SHALL NOT BE USED FOR CONSTRUCTION UNLESS CERTIFIED FROM ANH DUONG METAL.  
THIS DRAWING AND DESIGN IS COPYRIGHT AND NO PORTION MAY BE REPRODUCED WITHOUT THE PERMISSION OF ANH DUONG METAL.

**ANH DUONG METAL**

Telephone : 03 889 23 998  
Email : contact@anhduongmetal.com.vn  
Website : Anhduongmetal.com.vn  
86 Nguyen Thi Nhung st, Hiep Binh Phuoc ward,  
Thu Duc city, HCMC





## TRẦN ALU.S TYPE B ALU.S TYPE B CEILING

- Lắp đặt dễ dàng  
Conveniently installation
- Kiến trúc hiện đại  
Contemporary architecture
- Vật liệu bền vững  
Sustainability material



**Alu.S type B** là tấm trần dạng sọc, dạng hờ được thiết kế hiện đại, mục tiêu lắp đặt thuận tiện và dễ dàng vận chuyển.

**Alu.S type B** is linear ceiling, be applied for contemporary architecture. Conveniently installation and delivery.

### Ứng dụng: Application:

☒ Nội Thất

☐ Ngoại Thất

☒ Đột lỗ

☒ Vân gỗ

**ANH DUONG METAL**

Telephone : (+84)388923998

Email : Contact@anhduongmetal.com.vn

Website : Anhduongmetal.com.vn

Address : 86 Nguyen Thi Nhung st, Hiep Binh Phuoc ward, Thu Duc city, HCMC

**SPECIFICATION**

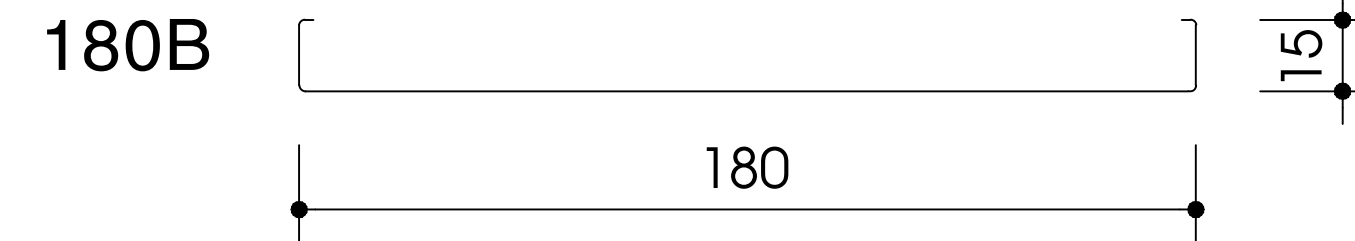
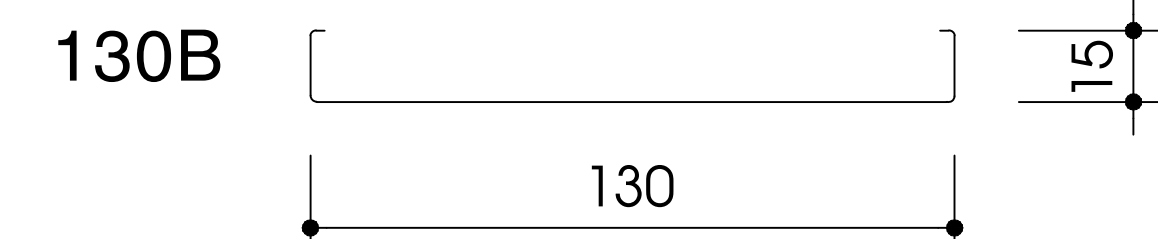
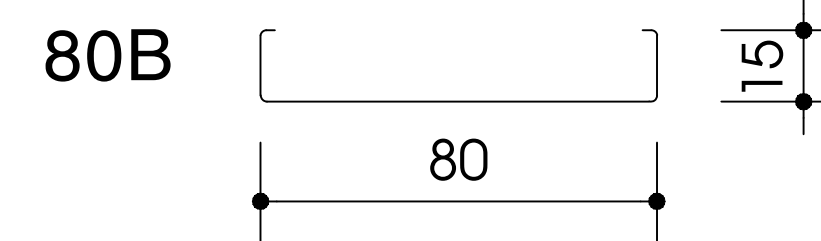
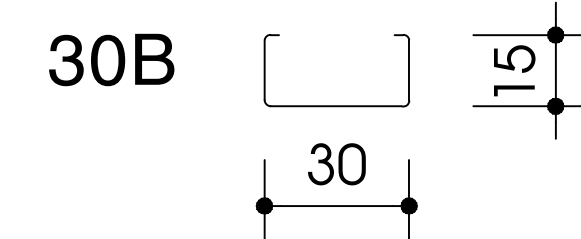
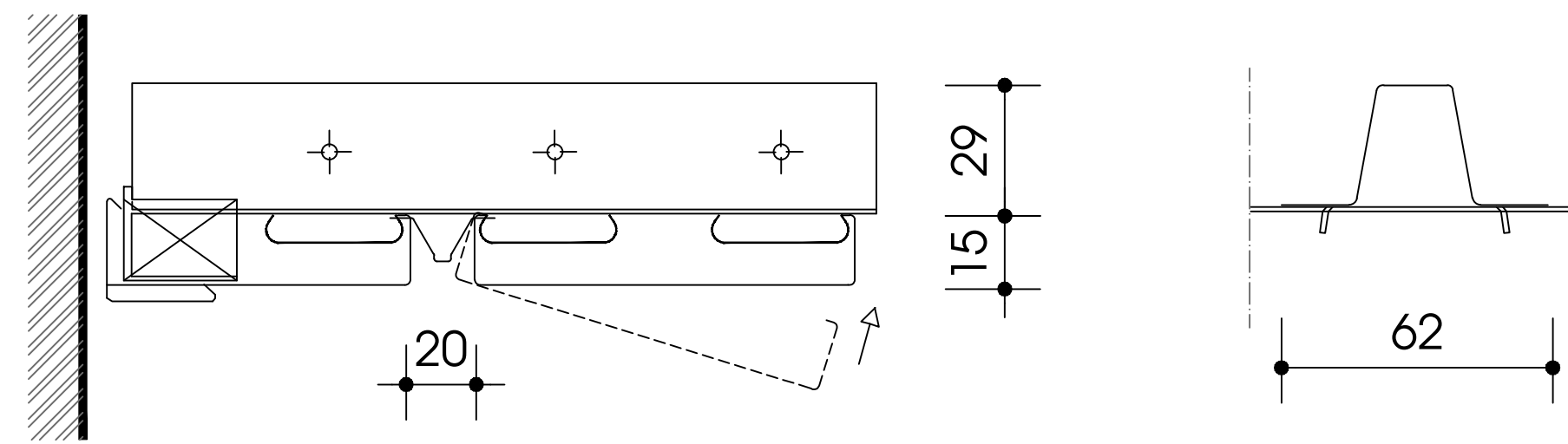
<b>Product name</b>	<b>ALUS-B</b>
Typical Size	30, 80, 130, 180mm width
Thickness	0.5-1.0mm
Material Applied	AA 3003-H14 or Equivalent
Color	Based on design
Type of Coating	PE / Powder coating/ PVDF
Standard of Coating	AAMA 2603/2604/2605
Frame and Accessories	Steel or Aluminium
Frame and Accessories Coating finish	Galvanized/ Hotdip galvanized/ PE

No	Specification	Unit	Result	Standard
I.TENSILE TEST FOR AA 3003-H14/24				
1	Tensile Strength (Rm)	MPa	min 145 - max 165	Standard DIN EN 485-2-2013: Aluminum and Aluminum Alloy - Part 2: Mechanical Properties
2	Yield Strength (Rpo,2)	MPa	min 125	
3	Elongation	%	min 4	
4	Hardness	HBW	46	
II. CHEMICAL COMPOSITION				
1	Silicon (Si)	%	0.6	Standard DIN EN 573-3-2009 : Aluminum and Aluminum Alloy - Chemical Composition and Form of Product
2	Iron (Fe)	%	0.7	
3	Copper (Cu)	%	0.05 - 0.2	
4	Manganese (Mn)	%	1.0 - 1.5	
5	Magnesium (Mg)	%	-	
6	Crom (Cr)	%	-	
7	Zinc (Zn)	%	0.1	
8	Other	%	0.15	
9	Aluminum (Al)	%	Remainder	

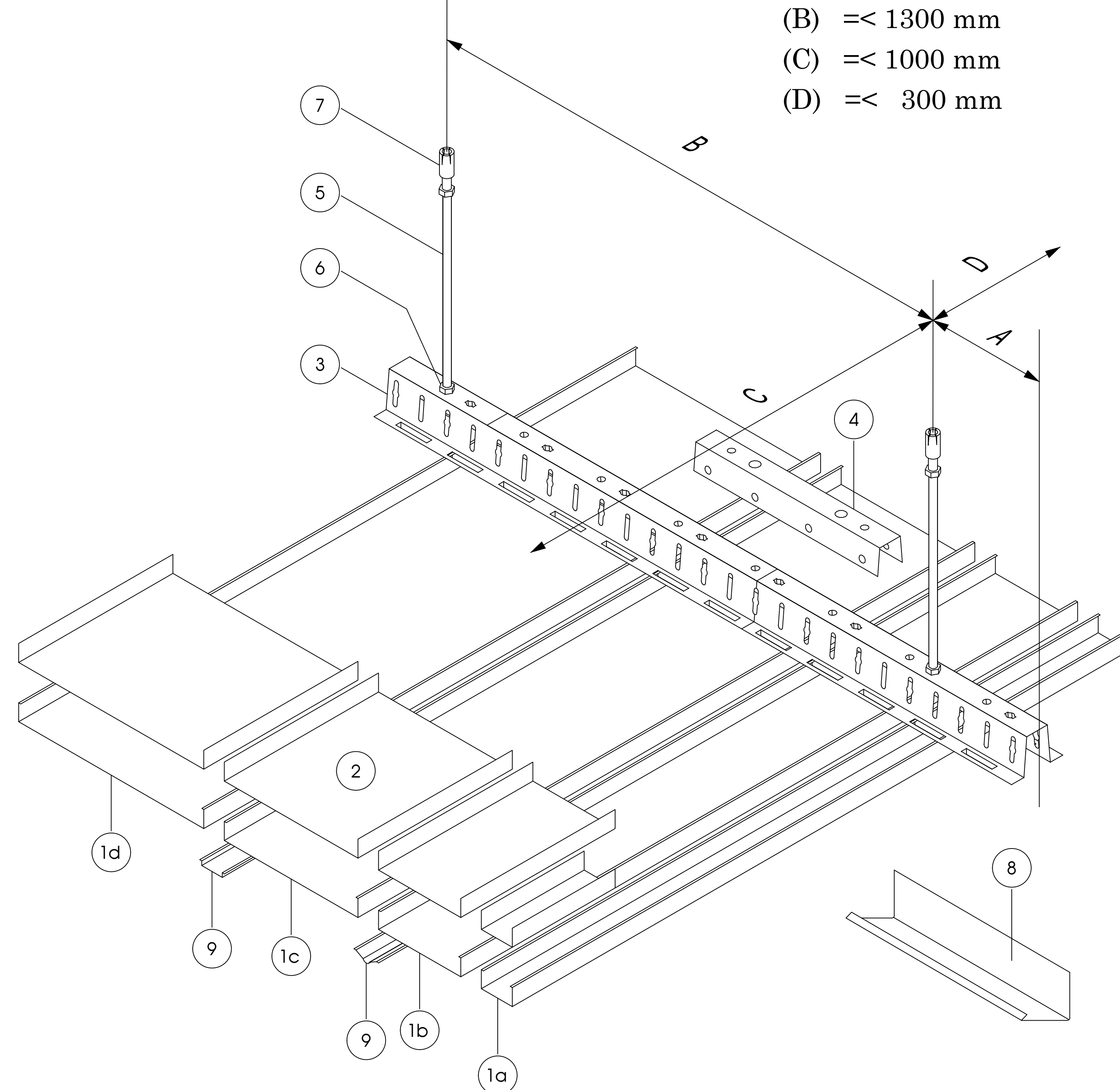
<b>III. TYPE OF COATING: PE/ POWDER COATING/ PVDF</b>				
1	Thickness	micron	According to standard of per type of coating	- Standard AAMA 2603/2604/2605 : Voluntary Specification, Performance Requirements and Test Procedures For Superior Performing Organic Coatings on Aluminum Extrusion and Panel
2	Color	micron	as requirement	



# ALUS 30B, 80B, 130B, 180B CEILING



## ILLUSTRATION TYPE B CEILING



- (A)  $\leq 300$  mm
- (B)  $\leq 1300$  mm
- (C)  $\leq 1000$  mm
- (D)  $\leq 300$  mm

(1, 1a, 1b, 1c) 30B-80B-130B-180B  
Made by aluminium alloy, 30-80-130-180mm width, 15mm height and color coating by design.

(2) Assembly panel bracket  
Made by aluminium alloy and color coating.  
Function is connect between two ceiling panels

(3) Ceiling frame  
Made by galvanized steel, 62mm width, 29mm height.

(4) Assmeby frame bracket  
Made by aluminium alloy and color coating.  
Function is connect between two ceiling frames.

(5) Hanger rod M6  
Made by galvanized steel

(6) Ecu M6  
Made by galvanized steel, function is adjust height of ceiling level.

(7) Anchor bolt M6  
Made by galvanized steel

(8) V25 edge cover  
Made by aluminium alloy, color coating.

© Copyright Anh Duong

**ALU.S**

ARCHITECTURAL PRODUCT'S DETAIL AND INSTALLATION  
THIS DRAWING SHALL NOT BE USED FOR CONSTRUCTION UNLESS CERTIFIED FROM ANH DUONG METAL.  
THIS DRAWING AND DESIGN IS COPYRIGHT AND NO PORTION MAY BE REPRODUCED WITHOUT THE PERMISSION OF ANH DUONG METAL.

**ANH DUONG METAL**

Telephone : 03 889 23 998  
Email : contact@anhduongmetal.com.vn  
Website : Anhduongmetal.com.vn  
86 Nguyen Thi Nhung st, Hiep Binh Phuoc ward,  
Thu Duc city, HCMC





## TRẦN ALU.S TYPE U ALU.S TYPE U CEILING

- Lắp đặt dễ dàng  
Conveniently installation
- Kiến trúc hiện đại  
Contemporary architecture
- Vật liệu bền vững  
Sustainability material



**Alu.S type U** là tấm trần dạng sọc, dạng hở được thiết kế hiện đại, mục tiêu lắp đặt thuận tiện và dễ dàng vận chuyển.

**Alu.S type U** is linear ceiling, be applied for contemporary architecture. Conveniently installation and delivery.

### Ứng dụng: Application:

☒ Nội Thất

☐ Ngoại Thất

☐ Đột lỗ

☒ Vân gỗ

**ANH DUONG METAL**

Telephone : (+84)388923998

Email : Contact@anhduongmetal.com.vn

Website : Anhduongmetal.com.vn

Address : 86 Nguyen Thi Nhung st, Hiep Binh Phuoc ward, Thu Duc city, HCMC

**SPECIFICATION**

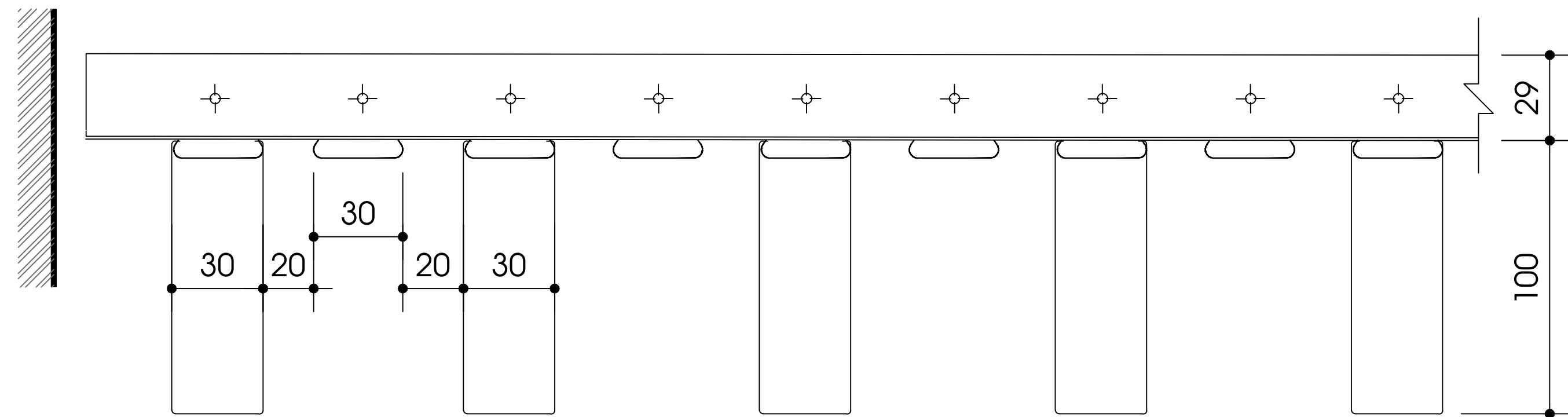
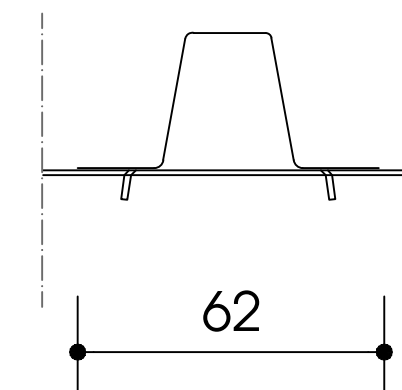
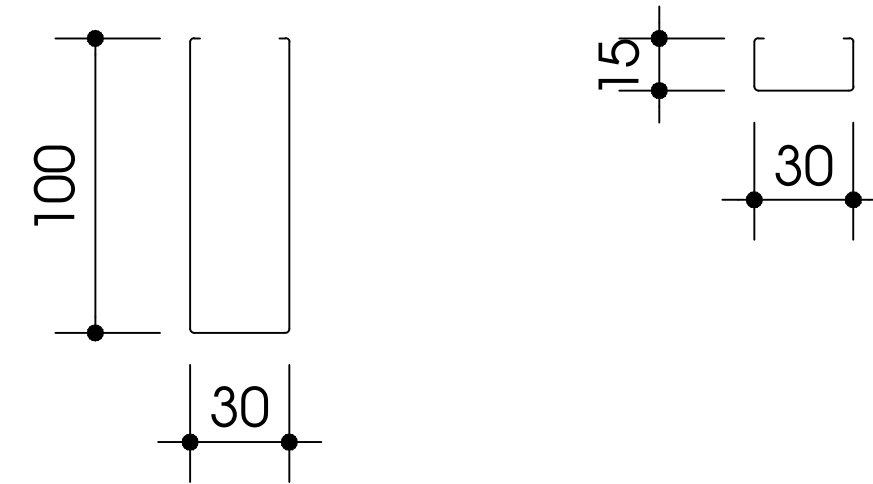
<b>Product name</b>	<b>ALUS-U</b>
Typical Size	30x100mm
Thickness	0.7-1.0mm
Material Applied	AA 3003-H14 or Equivalent
Color	Based on design
Type of Coating	PE / Powder coating/ PVDF
Standard of Coating	AAMA 2603/2604/2605
Frame and Accessories	Steel or Aluminium
Frame and Accessories Coating finish	Galvanized/ Hotdip galvanized/ PE

No	Specification	Unit	Result	Standard
I.TENSILE TEST FOR AA 3003-H14/24				
1	Tensile Strength (Rm)	MPa	min 145 - max 165	Standard DIN EN 485-2-2013: Aluminum and Aluminum Alloy - Part 2: Mechanical Properties
2	Yield Strength (Rpo,2)	MPa	min 125	
3	Elongation	%	min 4	
4	Hardness	HBW	46	
II. CHEMICAL COMPOSITION				
1	Sillicon (Si)	%	0.6	Standard DIN EN 573-3-2009 : Aluminum and Aluminum Alloy - Chemical Composition and Form of Product
2	Iron (Fe)	%	0.7	
3	Copper (Cu)	%	0.05 - 0.2	
4	Manganese (Mn)	%	1.0 - 1.5	
5	Magnesium (Mg)	%	-	
6	Crom (Cr)	%	-	
7	Zinc (Zn)	%	0.1	
8	Other	%	0.15	
9	Aluminum (Al)	%	Remainder	

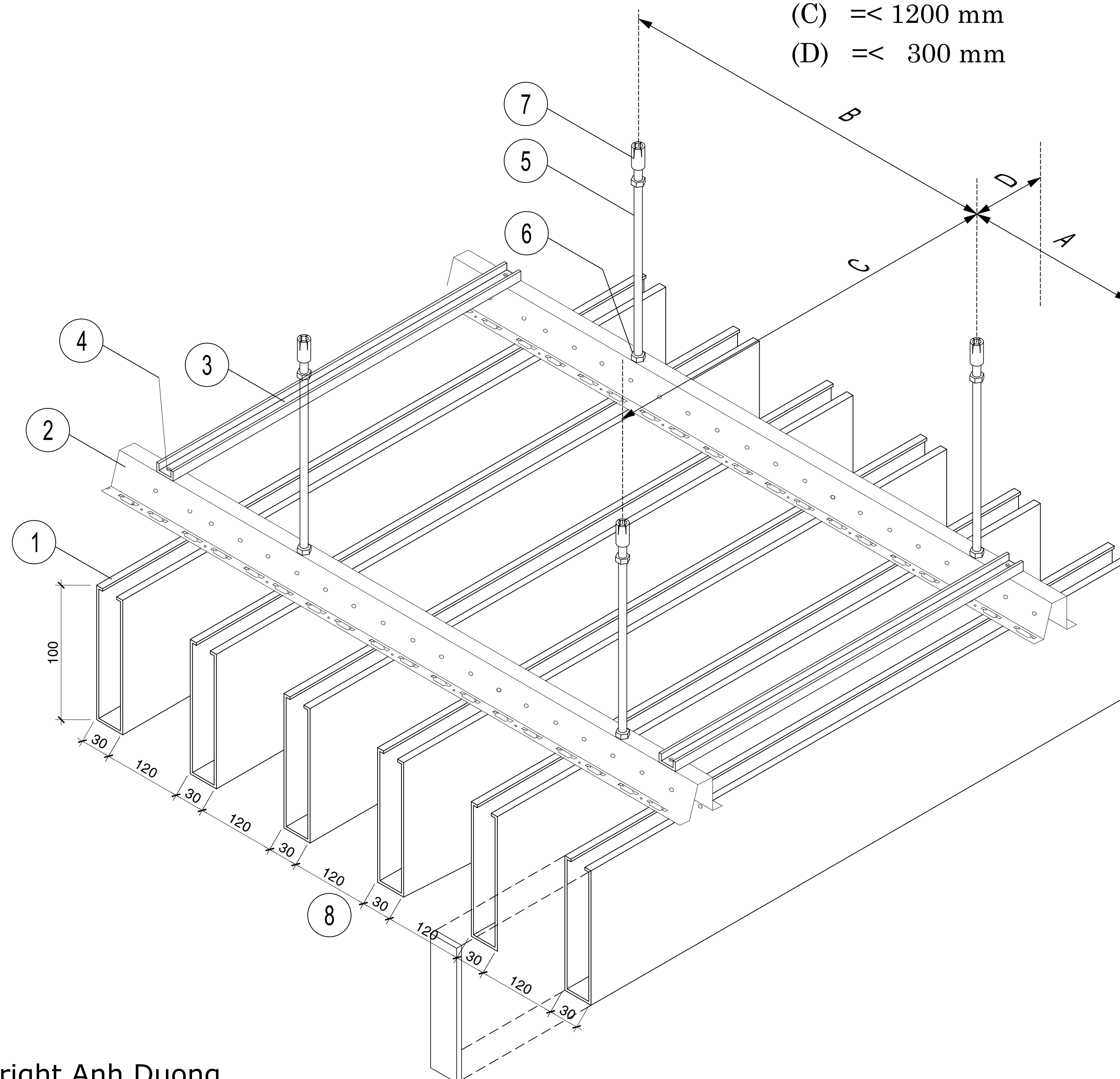
<b>III. TYPE OF COATING: PE/ POWDER COATING/ PVDF</b>				
1	Thickness	micron	According to standard of per type of coating	- Standard AAMA 2603/2604/2605 : Voluntary Specification, Performance Requirements and Test Procedures For Superior Performing Organic Coatings on Aluminum Extrusion and Panel
2	Color	micron	as requirement	



# ALUS U CEILING



## ILLUSTRATION TYPE U CEILING



- (A)  $\leq 300$  mm
- (B)  $\leq 1200$  mm
- (C)  $\leq 1200$  mm
- (D)  $\leq 300$  mm

### (1) Type U

Made by aluminium alloy, 30mm width, 100mm height and color coating by design.

### (2) Ceiling frame

Made by galvanized steel, 62mm width, 29mm height.

### (3) 30B

Made by aluminium alloy and color coating.  
Function is connect between two ceiling frames.

### (4) Screw

Made by galvanized steel

### (5) Hanger rod M6

Made by galvanized steel

### (6) Ecu M6

Made by galvanized steel, function is adjust height of ceiling level.

### (7) Anchor bolt M6

Made by galvanized steel

### (8) Endcap

Made by aluminium alloy, color coating.

© Copyright Anh Duong

**ALUS**

ARCHITECTURAL PRODUCT'S DETAIL AND INSTALLATION

THE DRAWING SHALL NOT BE USED FOR CONSTRUCTION UNLESS CERTIFIED FROM ANH DUONG METAL.  
THIS DRAWING AND DESIGN IS COPYRIGHT AND NO PORTION MAY BE REPRODUCED WITHOUT THE PERMISSION OF ANH DUONG METAL.

**ANH DUONG METAL**

Telephone : 03 889 23 998  
Email : contact@anhduongmetal.com.vn  
Website : Anhduongmetal.com.vn  
86 Nguyen Thi Nhung st, Hiep Binh Phuoc ward,  
Thu Duc city, HCMC





## TRẦN ALU.S CLIP-IN ALU.S CLIP-IN CEILING

- Lắp đặt dễ dàng  
Conveniently installation
- Kiến trúc hiện đại  
Contemporary architecture
- Vật liệu bền vững  
Sustainability material



**Alu.S Clip-in** là tấm trần dạng tấm, được thiết kế hiện đại, mục tiêu lắp đặt thuận tiện và dễ dàng vận chuyển.

**Alu.S Clip-in** is panel ceiling, be applied for contemporary architecture. Conveniently installation and delivery.

### Ứng dụng: Application:

 Nội Thất

 Ngoại Thất

 Đột lỗ

 Vân gỗ

**ANH DUONG METAL**

Telephone : (+84)388923998

Email : Contact@anhduongmetal.com.vn

Website : Anhduongmetal.com.vn

Address : 86 Nguyen Thi Nhung st, Hiep Binh Phuoc ward, Thu Duc city, HCMC

**SPECIFICATION**

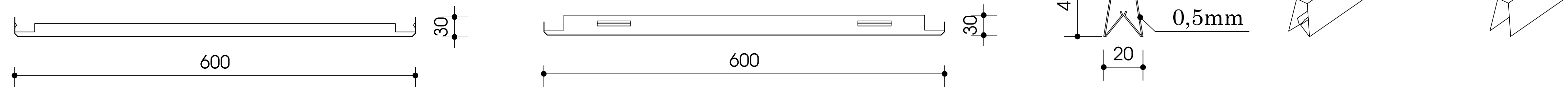
<b>Product name</b>	<b>ALUS CLIP-IN</b>
Typical Size	600x600mm
Thickness	0.7-1.0mm
Material Applied	AA 3003-H14 or Equivalent
Color	Based on design
Type of Coating	PE / Powder coating/ PVDF
Standard of Coating	AAMA 2603/2604/2605
Frame and Accessories	Steel or Aluminium
Frame and Accessories Coating finish	Galvanized/ Hotdip galvanized/ PE

No	Specification	Unit	Result	Standard
I.TENSILE TEST FOR AA 3003-H14/24				
1	Tensile Strength (Rm)	MPa	min 145 - max 165	Standard DIN EN 485-2-2013: Aluminum and Aluminum Alloy - Part 2: Mechanical Properties
2	Yield Strength (Rpo,2)	MPa	min 125	
3	Elongation	%	min 4	
4	Hardness	HBW	46	
II. CHEMICAL COMPOSITION				
1	Silicon (Si)	%	0.6	Standard DIN EN 573-3-2009 : Aluminum and Aluminum Alloy - Chemical Composition and Form of Product
2	Iron (Fe)	%	0.7	
3	Copper (Cu)	%	0.05 - 0.2	
4	Manganese (Mn)	%	1.0 - 1.5	
5	Magnesium (Mg)	%	-	
6	Crom (Cr)	%	-	
7	Zinc (Zn)	%	0.1	
8	Other	%	0.15	
9	Aluminum (Al)	%	Remainder	

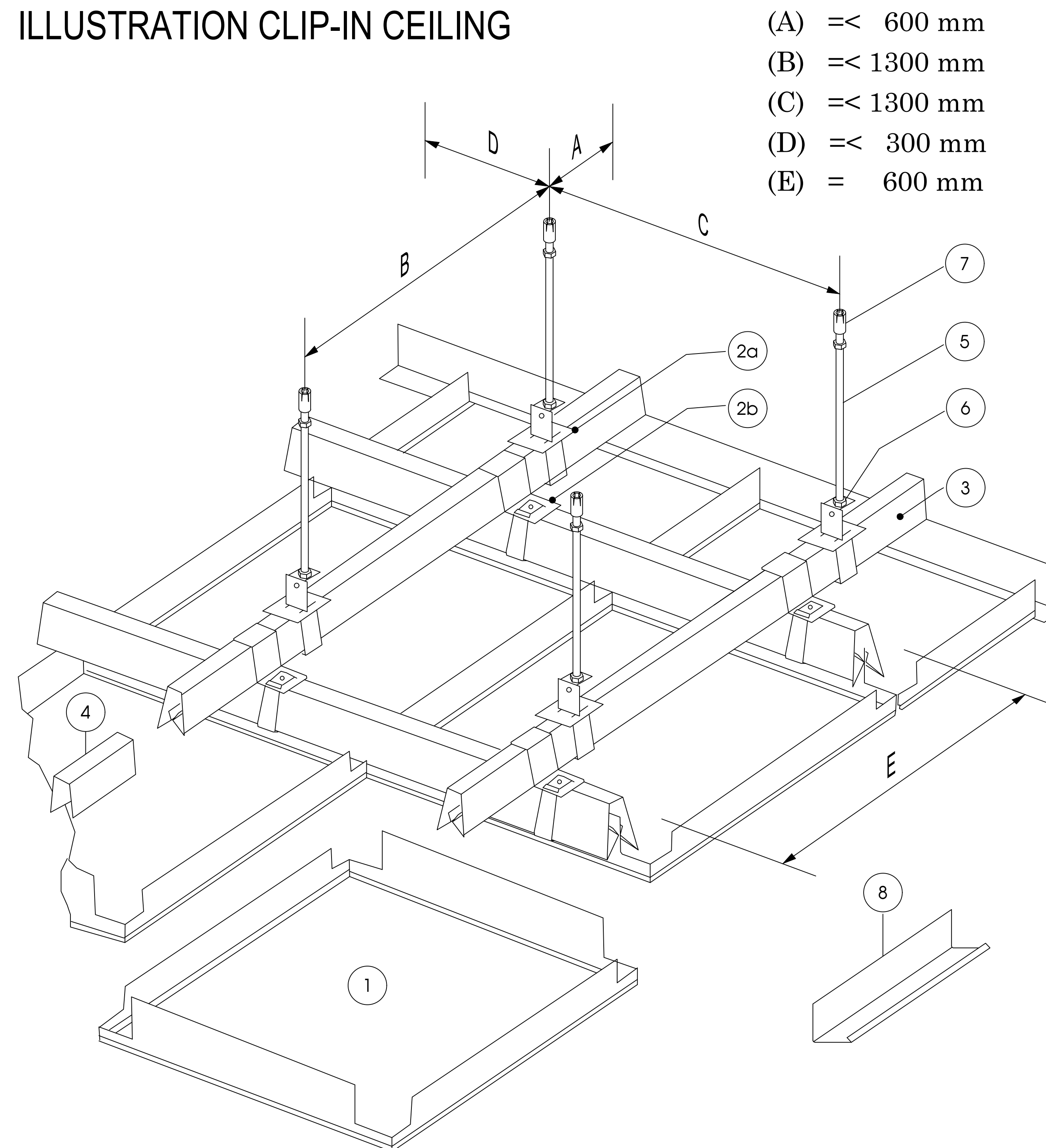
<b>III. TYPE OF COATING: PE/ POWDER COATING/ PVDF</b>				
1	Thickness	micron	According to standard of per type of coating	- Standard AAMA 2603/2604/2605 : Voluntary Specification, Performance Requirements and Test Procedures For Superior Performing Organic Coatings on Aluminum Extrusion and Panel
2	Color	micron	as requirement	



# ALUS CLIP-IN CEILING



## ILLUSTRATION CLIP-IN CEILING



- (A)  $\leq 600$  mm
- (B)  $\leq 1300$  mm
- (C)  $\leq 1300$  mm
- (D)  $\leq 300$  mm
- (E) = 600 mm

### (1) Clip-in Panel

Made by aluminium alloy, 600x600mm, 30mm height and color coating by design.

### (2a, 2b) Up and down connection

Made by galvanized steel

Function: Connecting between frame system and the rod.

### (3) Clip-in profile

Made by galvanized steel 40x20mm, 0.5mm thickness, 5m length.

### (4) Clip-in profile splice

Made by galvanized steel

Function: Connecting clip-in profiles together.

### (5) Hanger rod M6

Made by galvanized steel

### (6) Ecu M6

Made by galvanized steel, function is adjust height of ceiling level.

### (7) Anchor bolt M6

Made by galvanized steel

### (8) V25 edge cover

Made by aluminium alloy, color coating.

© Copyright Anh Duong

**ALU.S**

ARCHITECTURAL PRODUCT'S DETAIL AND INSTALLATION

THE DRAWING SHALL NOT BE USED FOR CONSTRUCTION UNLESS CERTIFIED FROM ANH DUONG METAL.  
THIS DRAWING AND DESIGN IS COPYRIGHT AND NO PORTION MAY BE REPRODUCED WITHOUT THE PERMISSION OF ANH DUONG METAL.

**ANH DUONG METAL**

Telephone : 03 889 23 998  
Email : contact@anhduongmetal.com.vn  
Website : Anhduongmetal.com.vn  
86 Nguyen Thi Nhung st, Hiep Binh Phuoc ward,  
Thu Duc city, HCMC



## TRẦN ALU.S HONEYCOMB ALU.S HONEYCOMB CEILING

- Lắp đặt dễ dàng  
Conveniently installation
- Kiến trúc hiện đại  
Contemporary architecture
- Vật liệu bền vững  
Sustainability material

**Alu.S Honeycomb** là tấm trần dạng tấm, được thiết kế hiện đại, mục tiêu lắp đặt thuận tiện và dễ dàng vận chuyển.

**Alu.S Honeycomb** is panel ceiling, be applied for contemporary architecture. Conveniently installation and delivery.

### Ứng dụng: Application:

☒ Nội Thất

☒ Ngoại Thất

☐ Đột lỗ

☒ Vân gỗ



**ANH DUONG METAL**

Telephone : (+84)388923998

Email : Contact@anhduongmetal.com.vn

Website : Anhduongmetal.com.vn

Address : 86 Nguyen Thi Nhung st, Hiep Binh Phuoc ward, Thu Duc city, HCMC

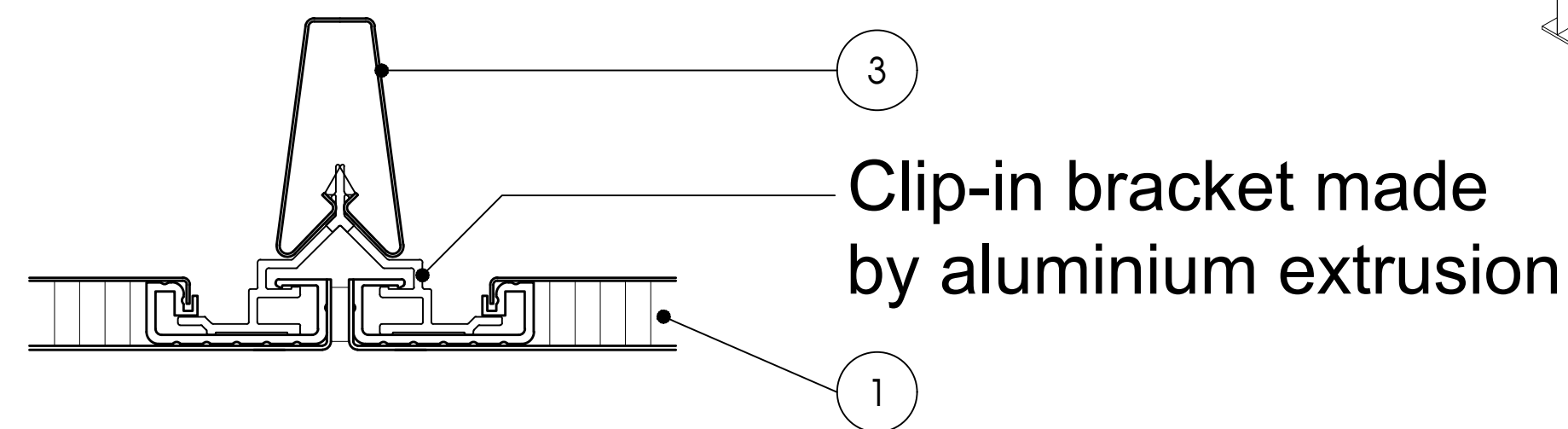
**SPECIFICATION**

<b>Product name</b>	<b>ALUS HONEYCOMB CEILING</b>
Typical Size	1200x2400mm
Front skin:	0.5mm PVDF/ PE coating
Core:	24mm mill finishing
Back skin:	0.5mm primer/ mill finishing
Material Applied	AA 3003-H14 or Equivalent
Color	Based on design
Type of Coating	PE / Powder coating/ PVDF
Standard of Coating	AAMA 2603/2604/2605
Frame and Accessories	Steel or Aluminium
Frame and Accessories Coating finish	Galvanized/ Hotdip galvanized/ PE

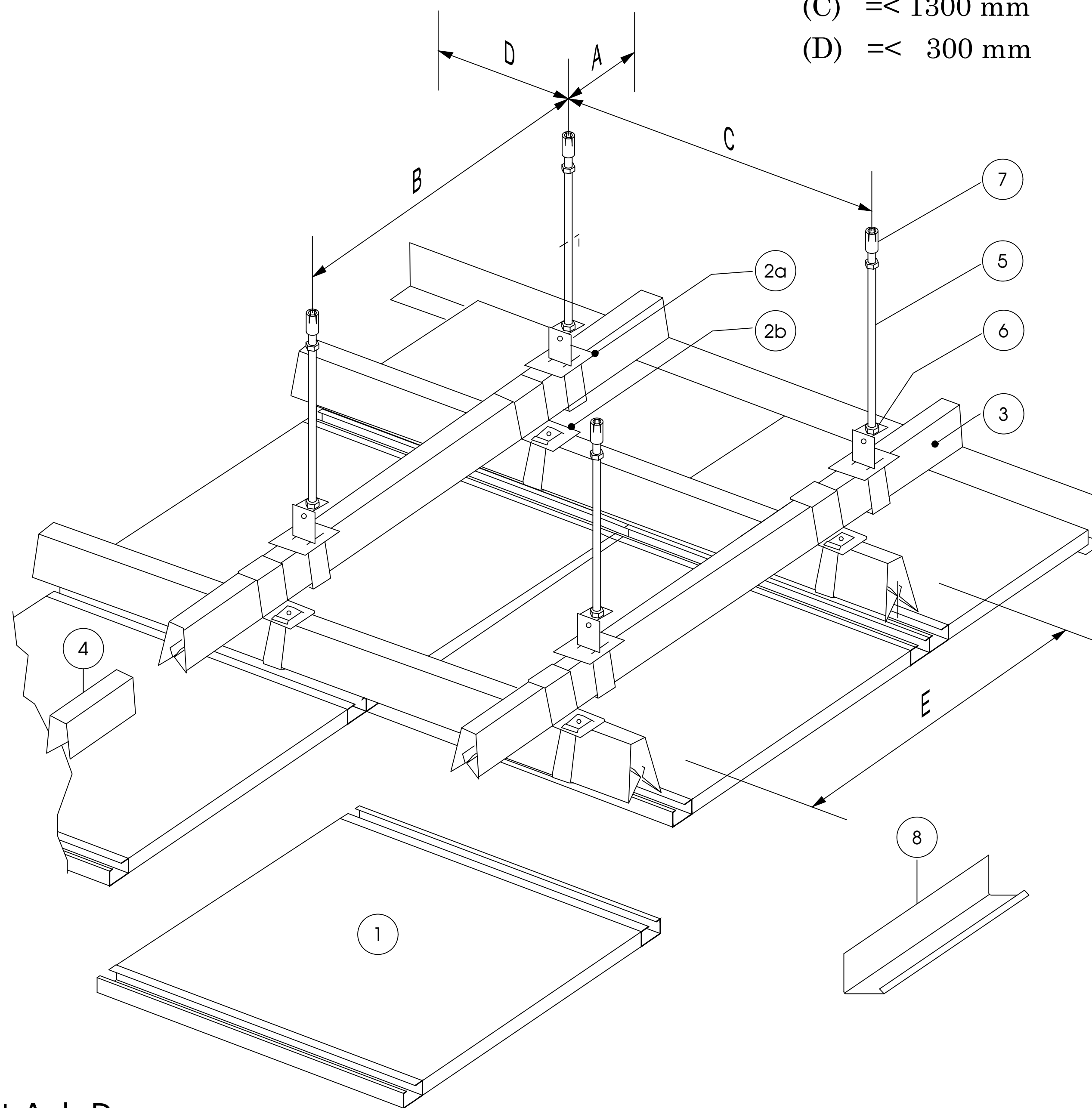
No	Specification	Unit	Result	Standard
I.TENSILE TEST FOR AA 3003-H14/24				
1	Tensile Strength (Rm)	MPa	min 145 - max 165	Standard DIN EN 485-2-2013: Aluminum and Aluminum Alloy - Part 2: Mechanical Properties
2	Yield Strength (Rpo,2)	MPa	min 125	
3	Elongation	%	min 4	
4	Hardness	HBW	46	
II. CHEMICAL COMPOSITION				
1	Sillicon (Si)	%	0.6	Standard DIN EN 573-3-2009 : Aluminum and Aluminum Alloy - Chemical Composition and Form of Product
2	Iron (Fe)	%	0.7	
3	Copper (Cu)	%	0.05 - 0.2	
4	Manganese (Mn)	%	1.0 - 1.5	
5	Magnesium (Mg)	%	-	
6	Crom (Cr)	%	-	
7	Zinc (Zn)	%	0.1	
8	Other	%	0.15	
9	Aluminum (Al)	%	Remainder	

<b>III. TYPE OF COATING: PE/ POWDER COATING/ PVDF</b>				
1	Thickness	micron	According to standard of per type of coating	- Standard AAMA 2603/2604/2605 : Voluntary Specification, Performance Requirements and Test Procedures For Superior Performing Organic Coatings on Aluminum Extrusion and Panel
2	Color	micron	as requirement	

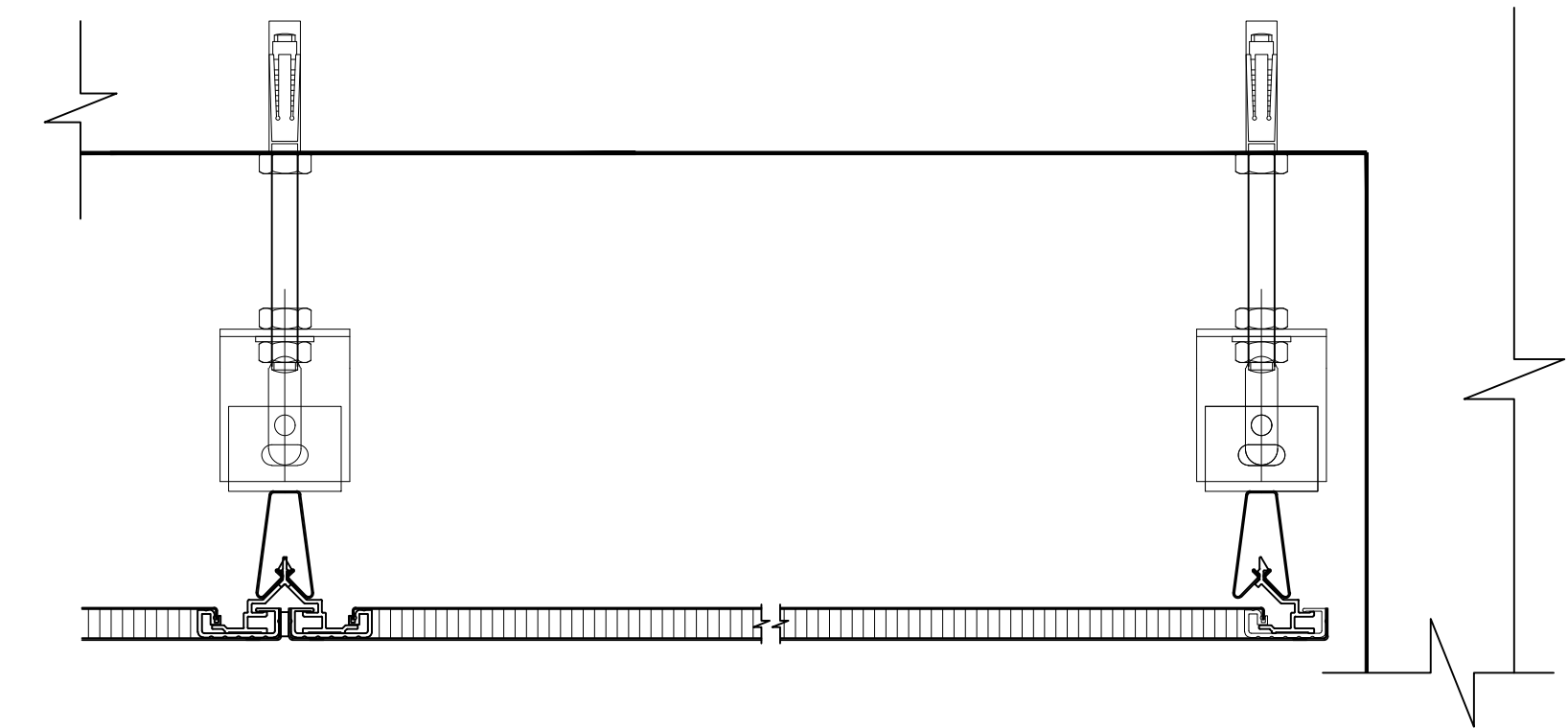
## ALUS HONEYCOMB CEILING



### ILLUSTRATION HONEYCOMB CEILING



- (A)  $\leq$  600 mm  
 (B)  $\leq$  1300 mm  
 (C)  $\leq$  1300 mm  
 (D)  $\leq$  300 mm



- (1) Honeycomb Panel ceiling  
 Made by honeycomb panel 1200x2400mm size,  
 25mm thickness and color coating by design.

- (2a, 2b) Up and down connection  
 Made by galvanized steel  
 Function: Connecting between frame system and  
 the rod.

- (3) Clip-in profile  
 Made by galvanized steel 40x20mm, 0.5mm  
 thickness, 5m length.

- (4) Clip-in profile splice  
 Made by galvanized steel  
 Function: Connecting clip-in profiles together.

- (5) Hanger rod M6  
 Made by galvanized steel

- (6) Ecu M6  
 Made by galvanized steel, function is adjust height  
 of ceiling level.

- (7) Anchor bolt M6  
 Made by galvanized steel

- (8) V25 edge cover  
 Made by aluminium alloy, color coating.

© Copyright Anh Duong

**ALUS**

ARCHITECTURAL PRODUCT'S DETAIL AND INSTALLATION

THIS DRAWING SHALL NOT BE USED FOR CONSTRUCTION UNLESS CERTIFIED FROM ANH DUONG METAL.  
 THIS DRAWING AND DESIGN IS COPYRIGHT AND NO PORTION MAY BE REPRODUCED WITHOUT THE PERMISSION OF  
 ANH DUONG METAL.

**ANH DUONG METAL**

Telephone : 03 889 23 998  
 Email : contact@anhduongmetal.com.vn  
 Website : Anhduongmetal.com.vn  
 86 Nguyen Thi Nhung st, Hiep Binh Phuoc ward,  
 Thu Duc city, HCMC



## TRẦN ALU.S TYPE F ALU.S TYPE F CEILING

- Lắp đặt dễ dàng  
Conveniently installation
- Kiến trúc hiện đại  
Contemporary architecture
- Vật liệu bền vững  
Sustainability material

**Alu.S Type F** là tấm trần dạng sọc, được thiết kế hiện đại, mục tiêu lắp đặt thuận tiện và dễ dàng vận chuyển.  
**Alu.S Type F** is linear ceiling, be applied for contemporary architecture. Conveniently installation and delivery.

### Ứng dụng: Application:

● Nội Thất

● Ngoại Thất

● Đột lỗ

● Vân gỗ



**ANH DUONG METAL**

Telephone : (+84)388923998

Email : Contact@anhduongmetal.com.vn

Website : Anhduongmetal.com.vn

Address : 86 Nguyen Thi Nhung st, Hiep Binh Phuoc ward, Thu Duc city, HCMC

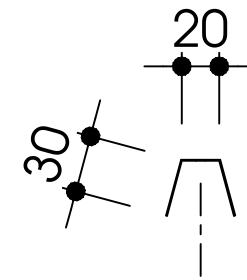
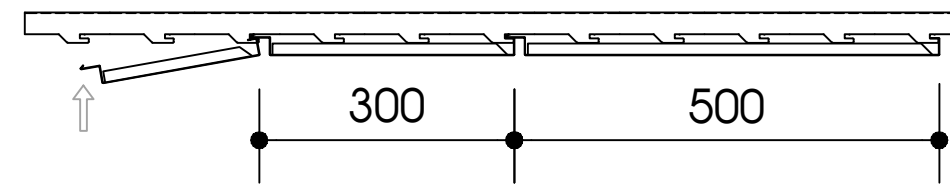
**SPECIFICATION**

<b>Product name</b>	<b>ALUS-F</b>
Typical Size	100, 200, 300, 500mm width
Thickness	0.5-0.7mm
Material Applied	AA 3003-H14 or Equivalent
Color	Based on design
Type of Coating	PE / Powder coating/ PVDF
Standard of Coating	AAMA 2603/2604/2605
Frame and Accessories	Steel or Aluminium
Frame and Accessories Coating finish	Galvanized/ Hotdip galvanized/ PE

No	Specification	Unit	Result	Standard
I.TENSILE TEST FOR AA 3003-H14/24				
1	Tensile Strength (Rm)	MPa	min 145 - max 165	Standard DIN EN 485-2-2013: Aluminum and Aluminum Alloy - Part 2: Mechanical Properties
2	Yield Strength (Rpo,2)	MPa	min 125	
3	Elongation	%	min 4	
4	Hardness	HBW	46	
II. CHEMICAL COMPOSITION				
1	Sillicon (Si)	%	0.6	Standard DIN EN 573-3-2009 : Aluminum and Aluminum Alloy - Chemical Composition and Form of Product
2	Iron (Fe)	%	0.7	
3	Copper (Cu)	%	0.05 - 0.2	
4	Manganese (Mn)	%	1.0 - 1.5	
5	Magnesium (Mg)	%	-	
6	Crom (Cr)	%	-	
7	Zinc (Zn)	%	0.1	
8	Other	%	0.15	
9	Aluminum (Al)	%	Remainder	

<b>III. TYPE OF COATING: PE/ POWDER COATING/ PVDF</b>				
1	Thickness	micron	According to standard of per type of coating	- Standard AAMA 2603/2604/2605 : Voluntary Specification, Performance Requirements and Test Procedures For Superior Performing Organic Coatings on Aluminum Extrusion and Panel
2	Color	micron	as requirement	

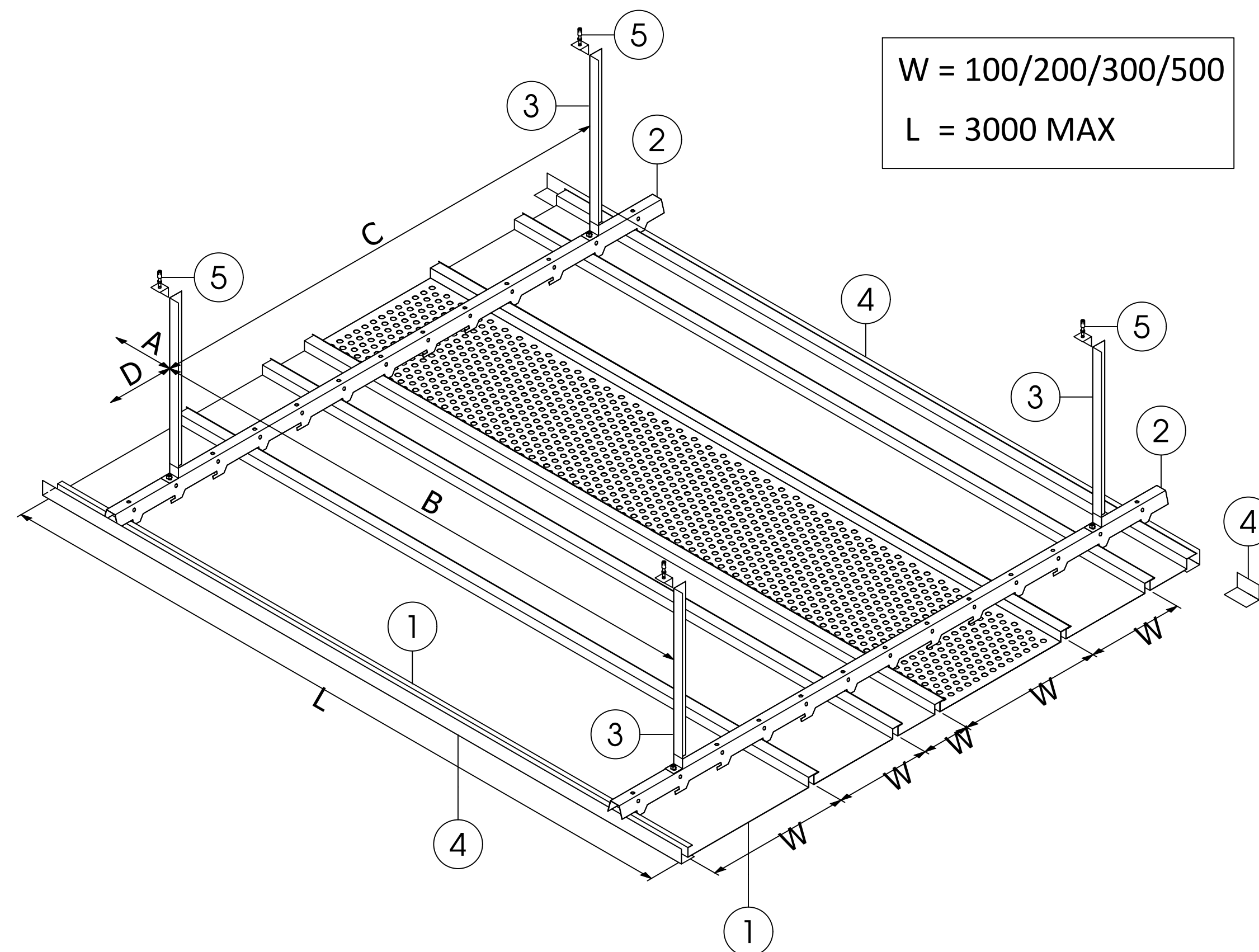
# ALUS F CEILING



## ILLUSTRATION TYPE F CEILING

- (A)  $\leq 150$  mm  
 (B)  $\leq 1200$  mm  
 (C)  $\leq 1200$  mm  
 (D)  $\leq 300$  mm

W = 100/200/300/500  
 L = 3000 MAX



### (1) 100-200-300-500F

Made by aluminium alloy, 100-200-300-500mm width, color coating by design.

### (2) Ceiling frame

Made by galvanized steel 0.7mm thk, 20mm width, 30mm heighth.

### (3) Hanger rod M6/ V3 galvanized steel

Made by galvanized steel

### (4) V25 edge cover

Made by aluminium alloy, color coating.

### (5) Anchor bolt M6

Made by galvanized steel

© Copyright Anh Duong



## ARCHITECTURAL PRODUCT'S DETAIL AND INSTALLATION

THE DRAWING SHALL NOT BE USED FOR CONSTRUCTION UNLESS CERTIFIED FROM ANH DUONG METAL.  
 THIS DRAWING AND DESIGN IS COPYRIGHT AND NO PORTION MAY BE REPRODUCED WITHOUT THE PERMISSION OF ANH DUONG METAL.



Telephone : 03 889 23 998  
 Email : [contact@anhduongmetal.com.vn](mailto:contact@anhduongmetal.com.vn)  
 Website : [anhduongmetal.com.vn](http://anhduongmetal.com.vn)  
 86 Nguyen Thi Nhung st, Hiep Binh Phuoc ward,  
 Thu Duc city, HCMC





## TẤM ỐP ALU.S ALU.S CLADDING

- Lắp đặt dễ dàng  
Conveniently installation
- Kiến trúc hiện đại  
Contemporary architecture
- Vật liệu bền vững  
Sustainability material



**Alu.S Cladding** là tấm ốp nhôm, được thiết kế hiện đại kết hợp đột lỗ chấn gấp, mục tiêu lắp đặt thuận tiện và dễ dàng vận chuyển.

**Alu.S Cladding** is aluminium panel, be applied for contemporary architecture include perforated and folded. Conveniently installation and delivery.

### Ứng dụng: Application:



Nội Thất



Ngoại Thất



Đột lỗ



Vân gồ

**ANH DUONG METAL**

Telephone : (+84)388923998  
Email : Contact@anhduongmetal.com.vn  
Website : Anhduongmetal.com.vn  
Address : 86 Nguyen Thi Nhung st, Hiep Binh Phuoc ward, Thu Duc city, HCMC

**SPECIFICATION**

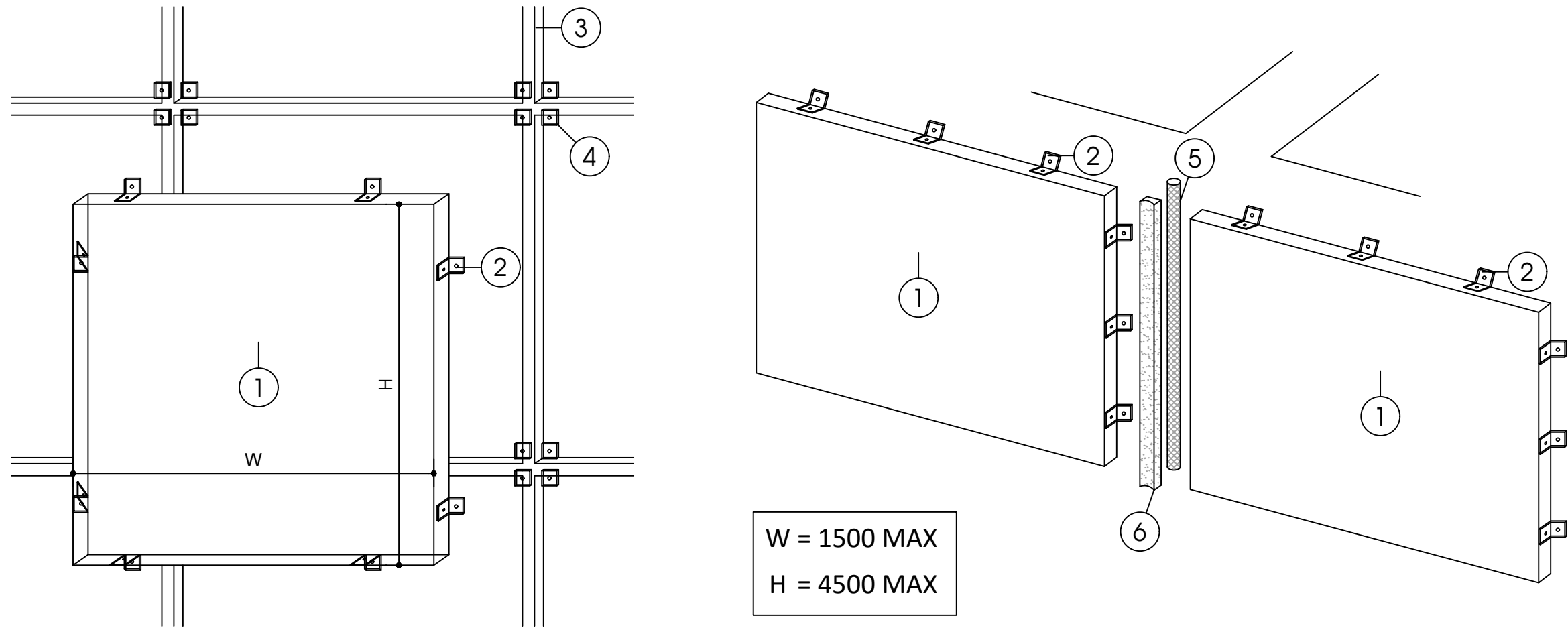
<b>Product name</b>	<b>ALUS-CLADDING</b>
Typical Size	1500mm width MAX 4500mm length MAX
Thickness	0.7-4.0mm
Material Applied	AA 3003-H14 or Equivalent
Color	Based on design
Type of Coating	PE / Powder coating/ PVDF
Standard of Coating	AAMA 2603/2604/2605
Frame and Accessories	Steel or Aluminium
Frame and Accessories Coating finish	Galvanized/ Hotdip galvanized/ PE

No	Specification	Unit	Result	Standard
I.TENSILE TEST FOR AA 3003-H14/24				
1	Tensile Strength (Rm)	MPa	min 145 - max 165	Standard DIN EN 485-2-2013: Aluminum and Aluminum Alloy - Part 2: Mechanical Properties
2	Yield Strength (Rpo,2)	MPa	min 125	
3	Elongation	%	min 4	
4	Hardness	HBW	46	
II. CHEMICAL COMPOSITION				
1	Sillicon (Si)	%	0.6	Standard DIN EN 573-3-2009 : Aluminum and Aluminum Alloy - Chemical Composition and Form of Product
2	Iron (Fe)	%	0.7	
3	Copper (Cu)	%	0.05 - 0.2	
4	Manganese (Mn)	%	1.0 - 1.5	
5	Magnesium (Mg)	%	-	
6	Crom (Cr)	%	-	
7	Zinc (Zn)	%	0.1	
8	Other	%	0.15	
9	Aluminum (Al)	%	Remainder	

<b>III. TYPE OF COATING: PE/ POWDER COATING/ PVDF</b>				
1	Thickness	micron	According to standard of per type of coating	- Standard AAMA 2603/2604/2605 : Voluntary Specification, Performance Requirements and Test Procedures For Superior Performing Organic Coatings on Aluminum Extrusion and Panel
2	Color	micron	as requirement	

# ALUS CLADDING

## ILLUSTRATION TYPE F CEILING



- (1) Aluminium Cladding  
Made by aluminium alloy, 0.7-4.0mm thickness,  
color coating by design.
- (2) Alu bracket  
Made by aluminium 2mm thk, V-shape by design.  
Mill finishing coating
- (3) Sub-frame  
Made by galvanized steel or hot deep gavanized  
steel

- (4) Bracket  
Made by galvanized steel or hot deep gavanized  
steel
- (5) Backer rod  
Made by PE foam D20-D25mm
- (3) Silicone cover  
Made by wheather-resistant silicone

© Copyright Anh Duong



ARCHITECTURAL PRODUCT'S DETAIL AND INSTALLATION  
THE DRAWING SHALL NOT BE USED FOR CONSTRUCTION UNLESS CERTIFIED FROM ANH DUONG METAL.  
THIS DRAWING AND DESIGN IS COPYRIGHT AND NO PORTION MAY BE REPRODUCED WITHOUT THE PERMISSION OF  
ANH DUONG METAL.



Telephone : 03 889 23 998  
Email : contact@anhduongmetal.com.vn  
Website : Anhduongmetal.com.vn  
86 Nguyen Thi Nhung st, Hiep Binh Phuoc ward,  
Thu Duc city, HCMC